



GUILDFORD
B O R O U G H

www.guildford.gov.uk

Tom Horwood
Joint Chief Executive of Guildford and
Waverley Borough Councils

Dear Councillor

PLANNING COMMITTEE - WEDNESDAY 11 OCTOBER 2023

Please find attached the following:

Agenda No Item

- f) Presentations (Pages 1 - 18)

Yours sincerely

Sophie Butcher, Democratic Services Officer

Encs

This page is intentionally left blank

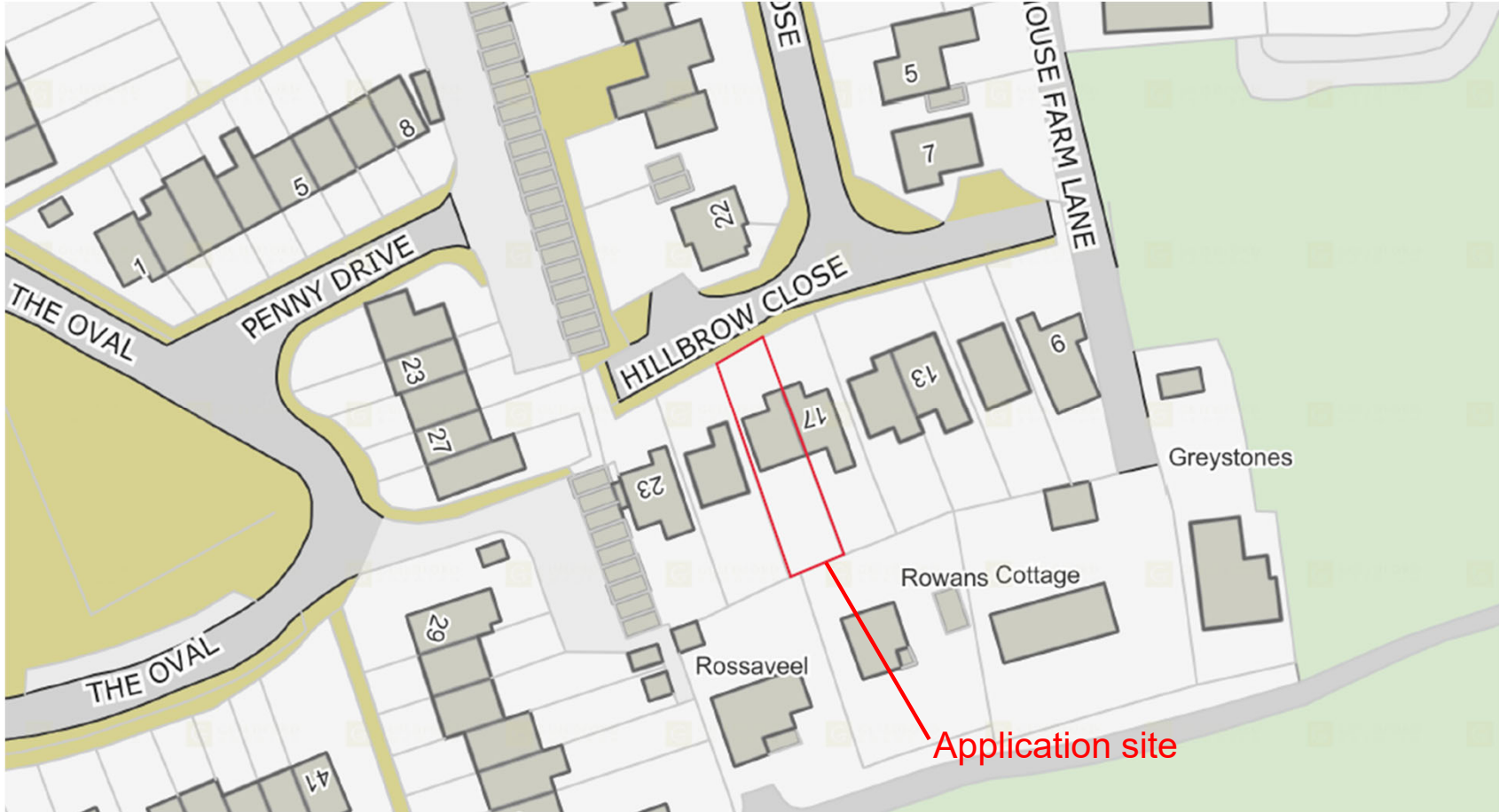
23/P/01428

**19 Hillbrow Close
Wood Street Village
GU3 3DF**

[Previous](#)

[Next](#)

[Home](#)

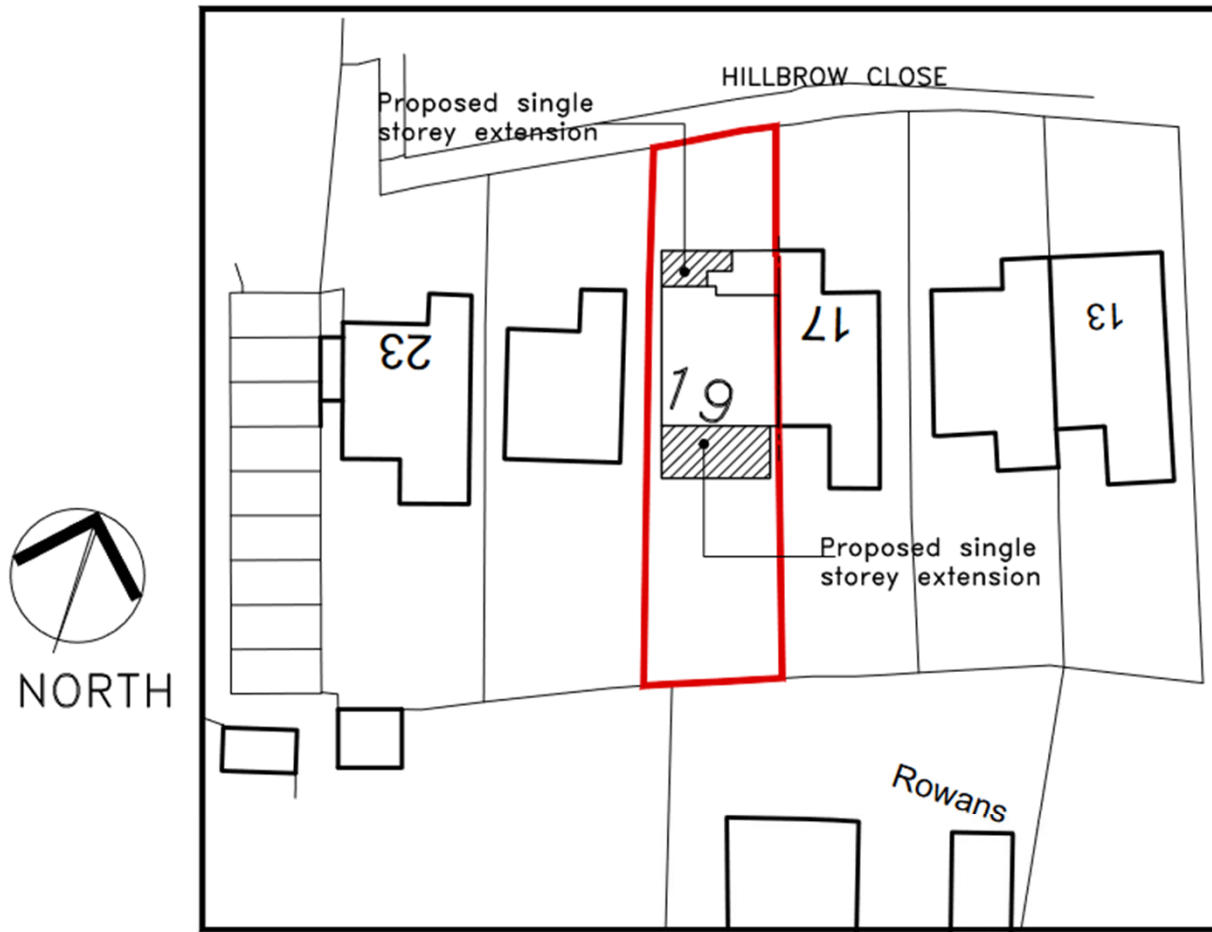


Site location plan

[Previous](#)

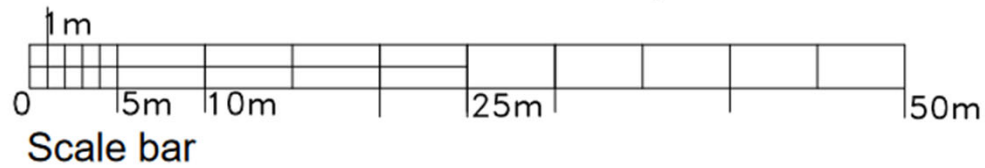
[Next](#)

[Home](#)



Block Plan

scale 1/500

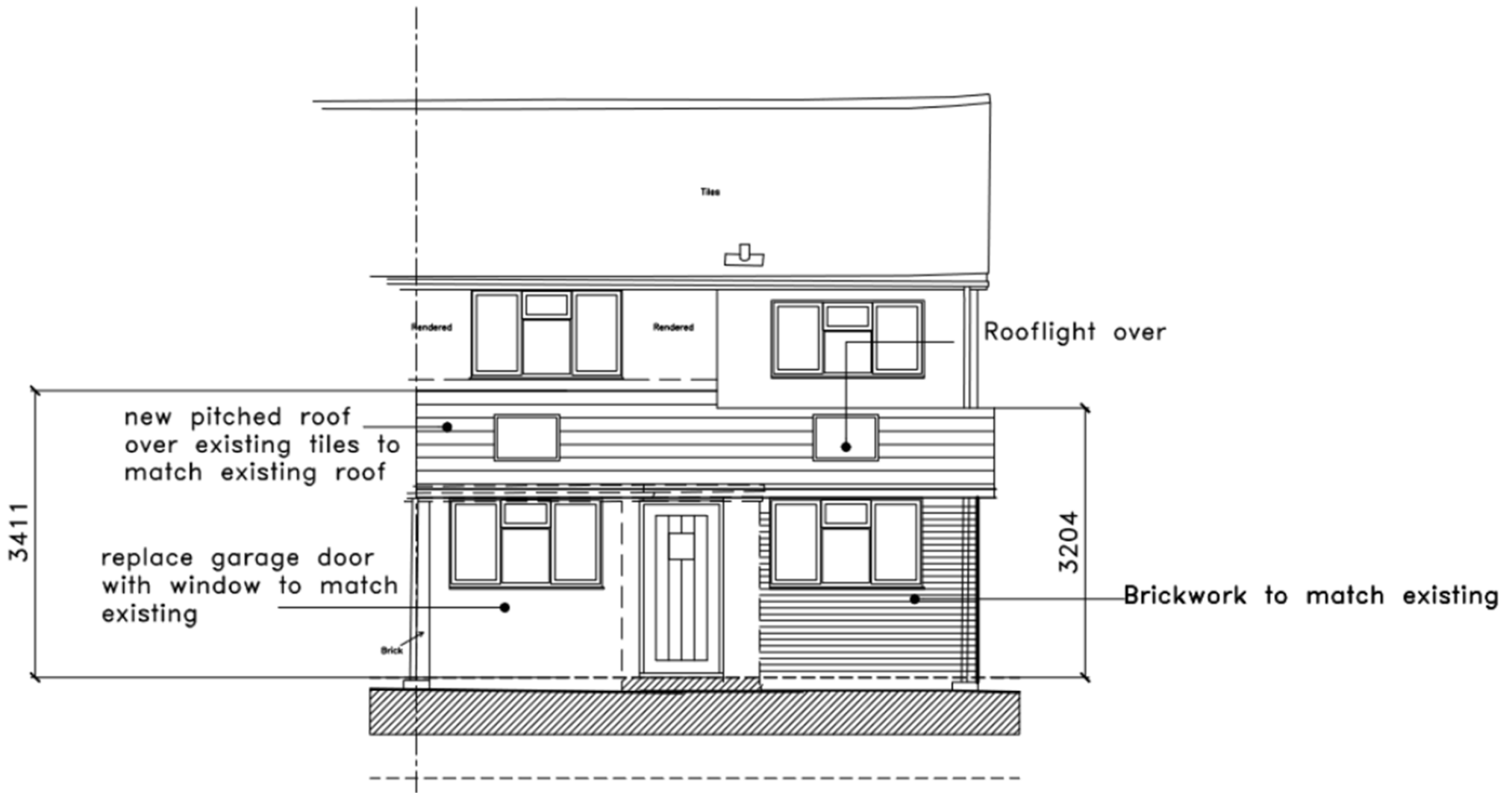


Proposed site layout

Previous

Next

Home



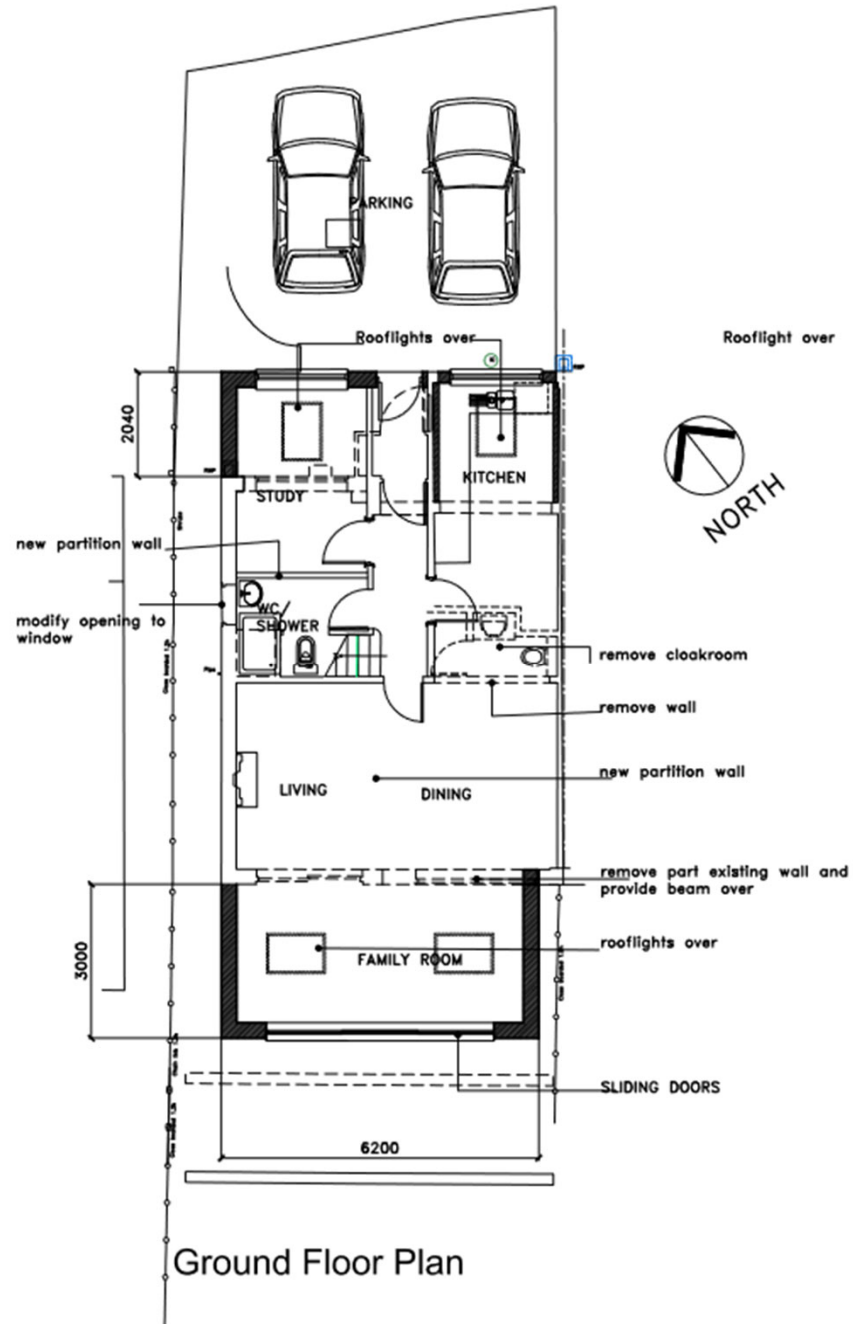
South West Elevation

Proposed front (Southwest) elevation

Previous

Next

Home

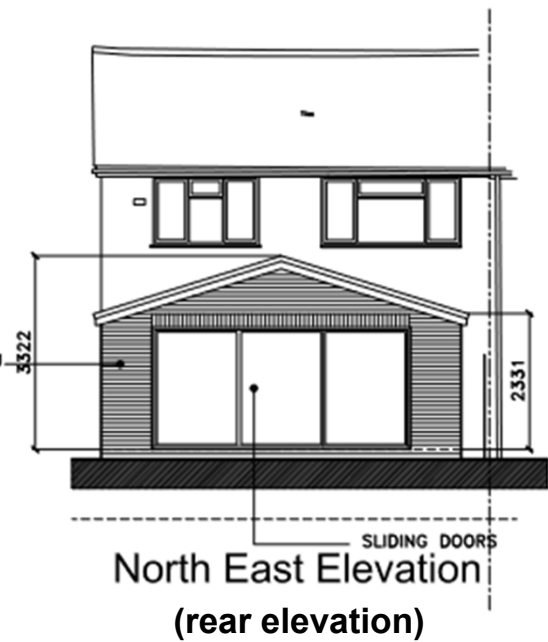
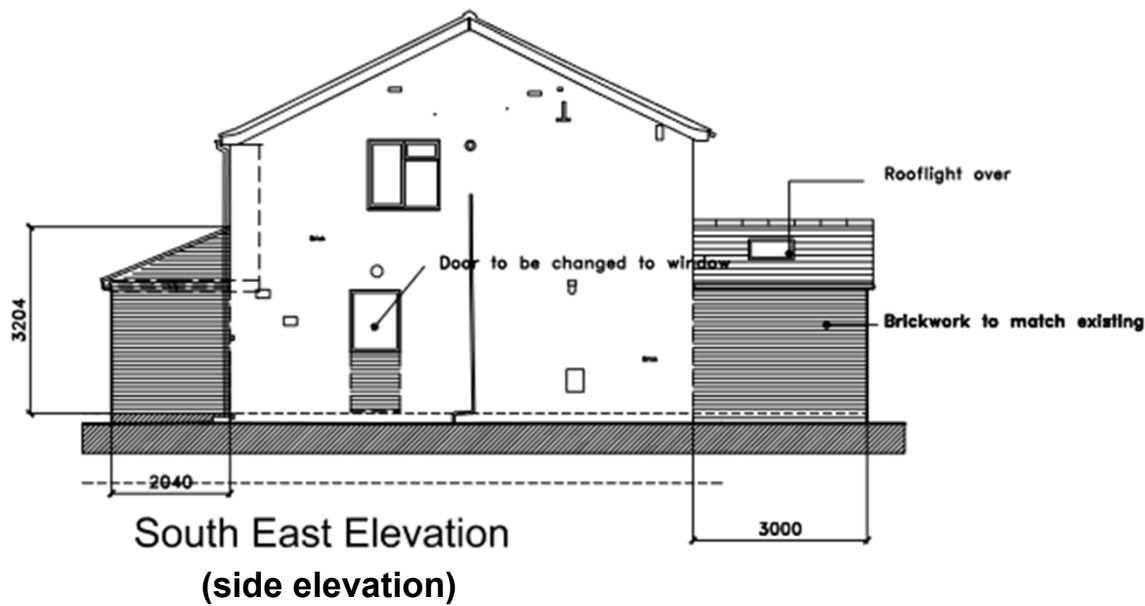
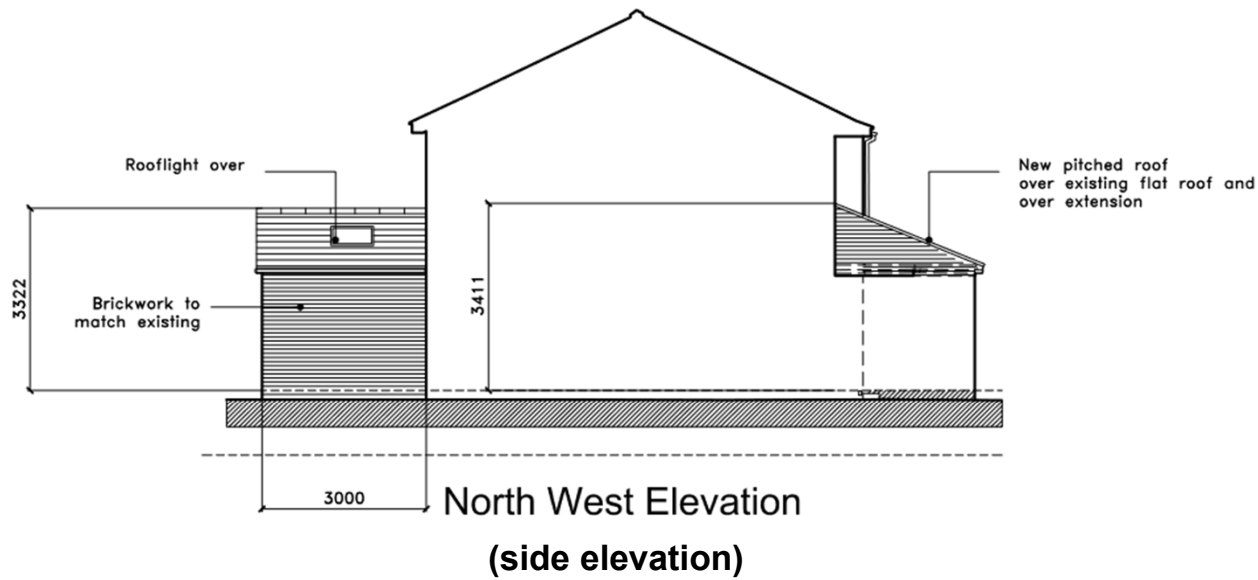


Proposed ground floor plan

Previous

Next

Home

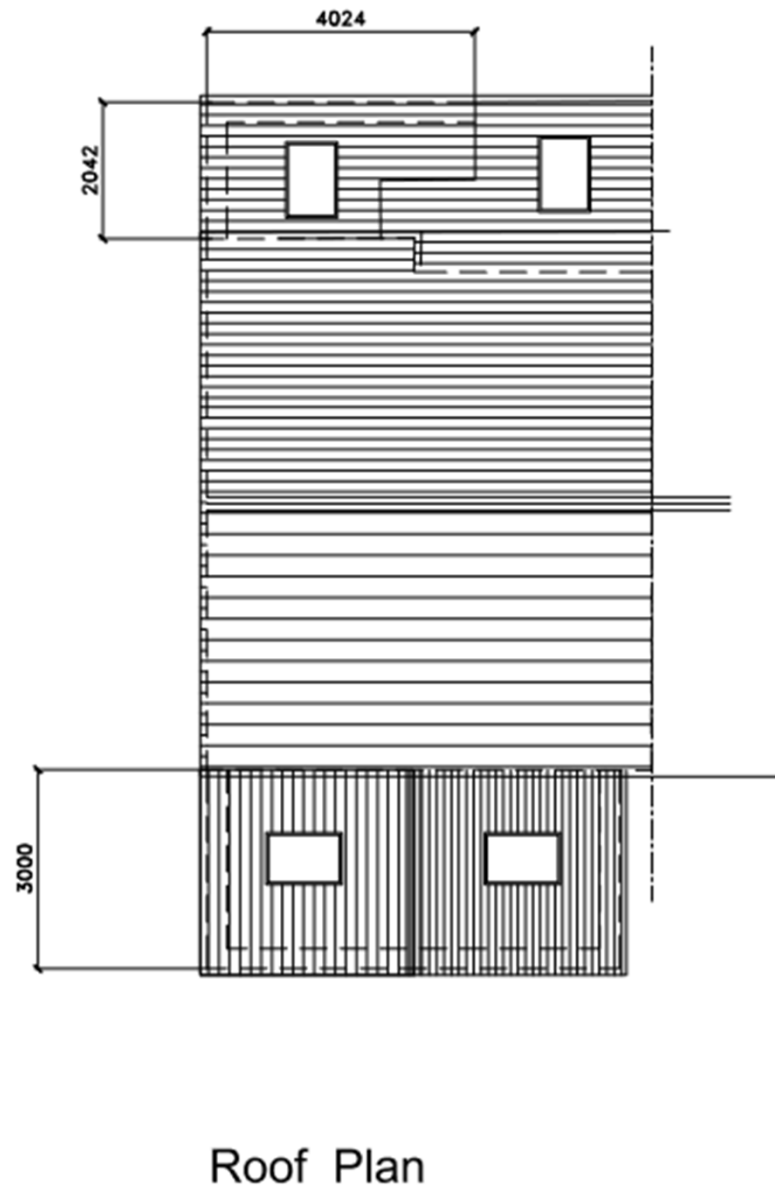
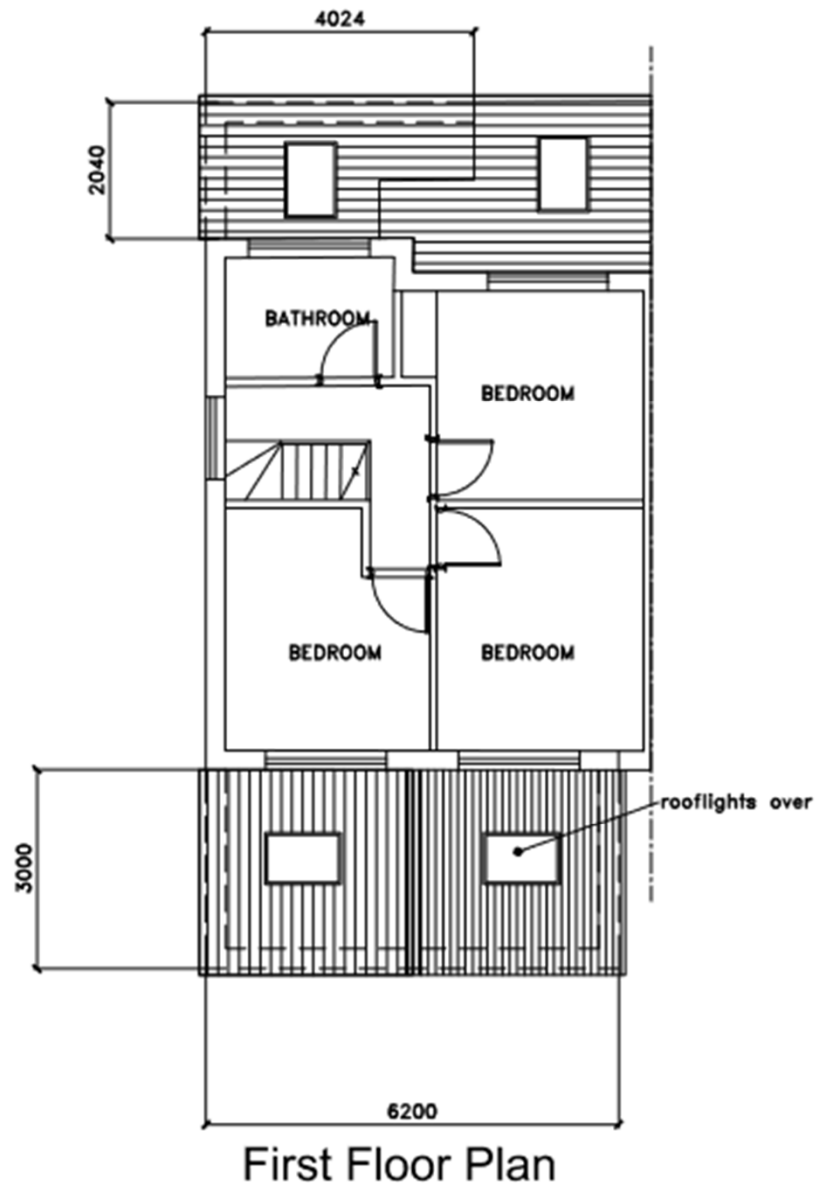


Proposed elevations

Previous

Next

Home

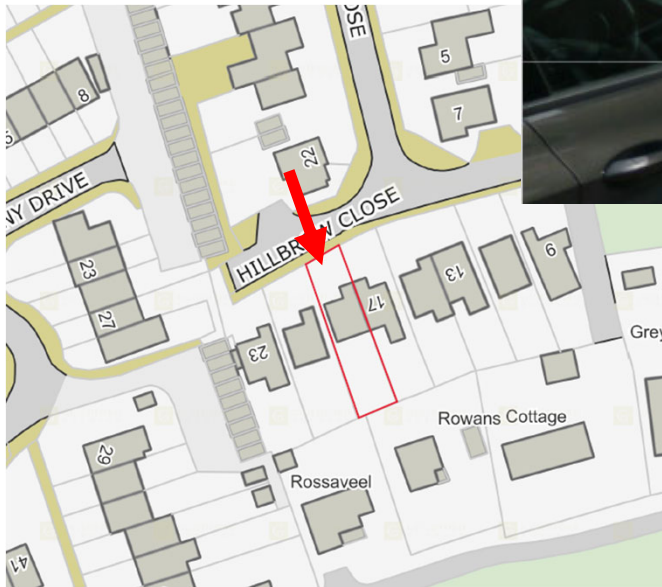


Proposed first floor and roof plan

[Previous](#)

[Next](#)

[Home](#)

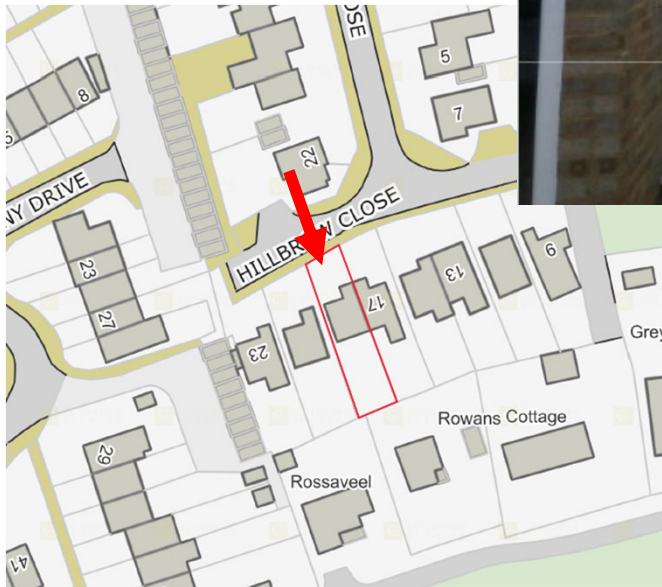


Front elevation view

[Previous](#)

[Next](#)

[Home](#)

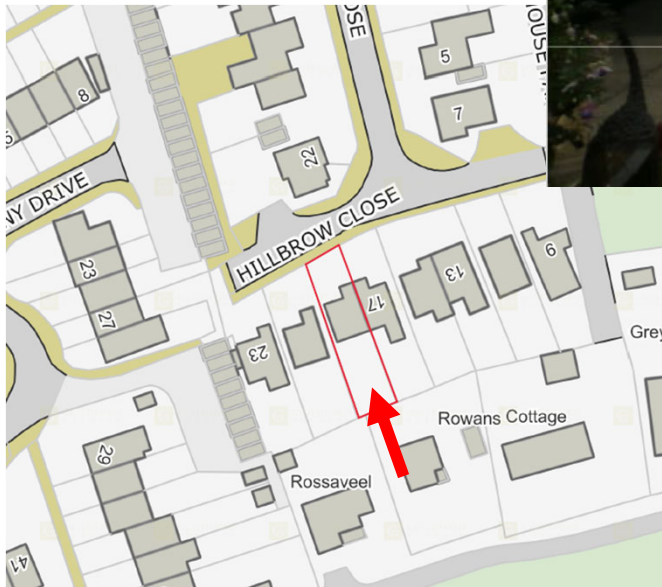


Front elevation view

[Previous](#)

[Next](#)

[Home](#)

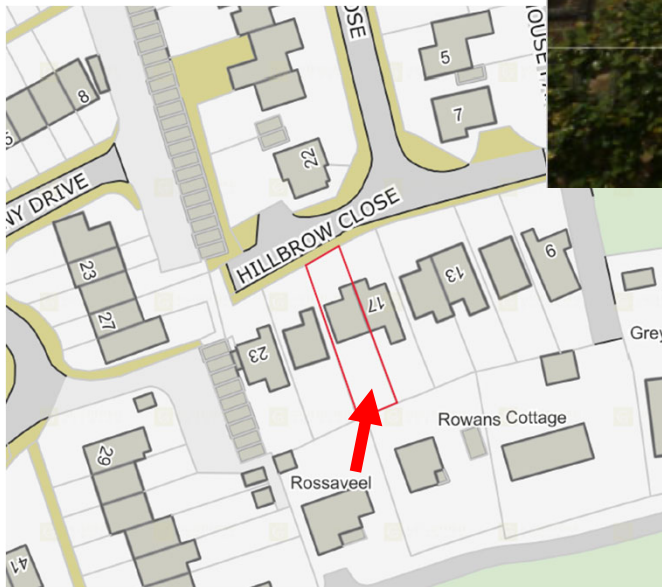


Rear elevation view

[Previous](#)

[Next](#)

[Home](#)

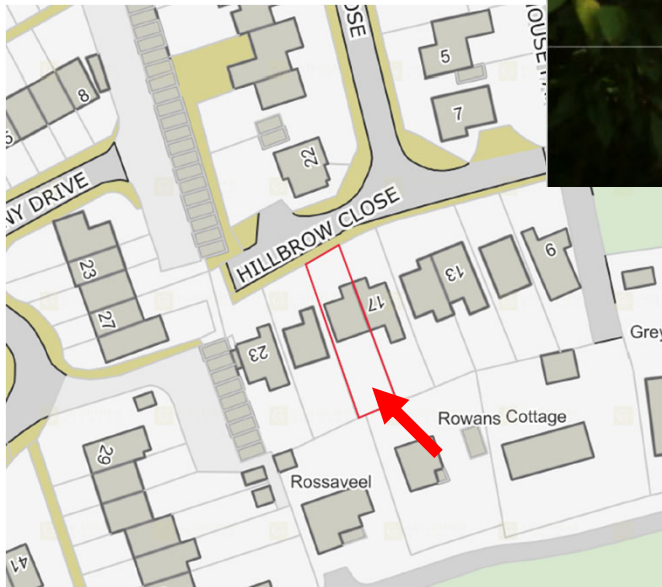


Rear elevation view

[Previous](#)

[Next](#)

[Home](#)

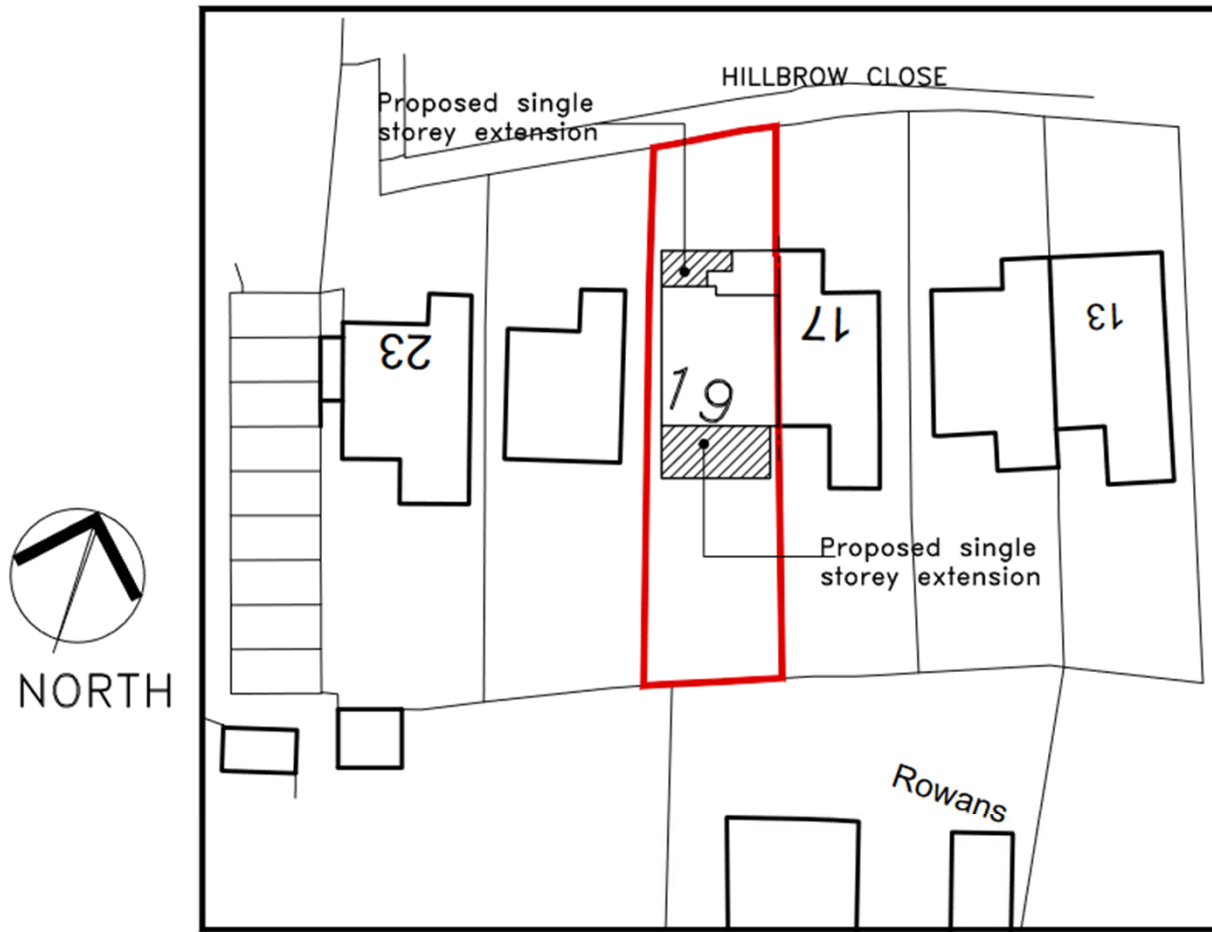


Rear elevation view

[Previous](#)

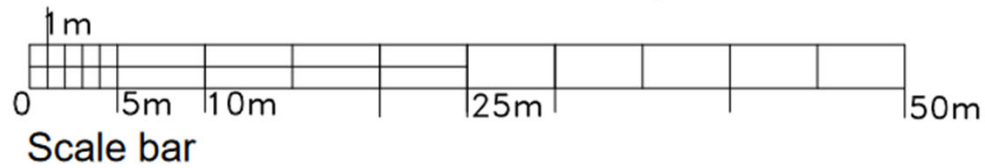
[Next](#)

[Home](#)



Block Plan

scale 1/500



Proposed site layout

Previous

Next

Home

This page is intentionally left blank

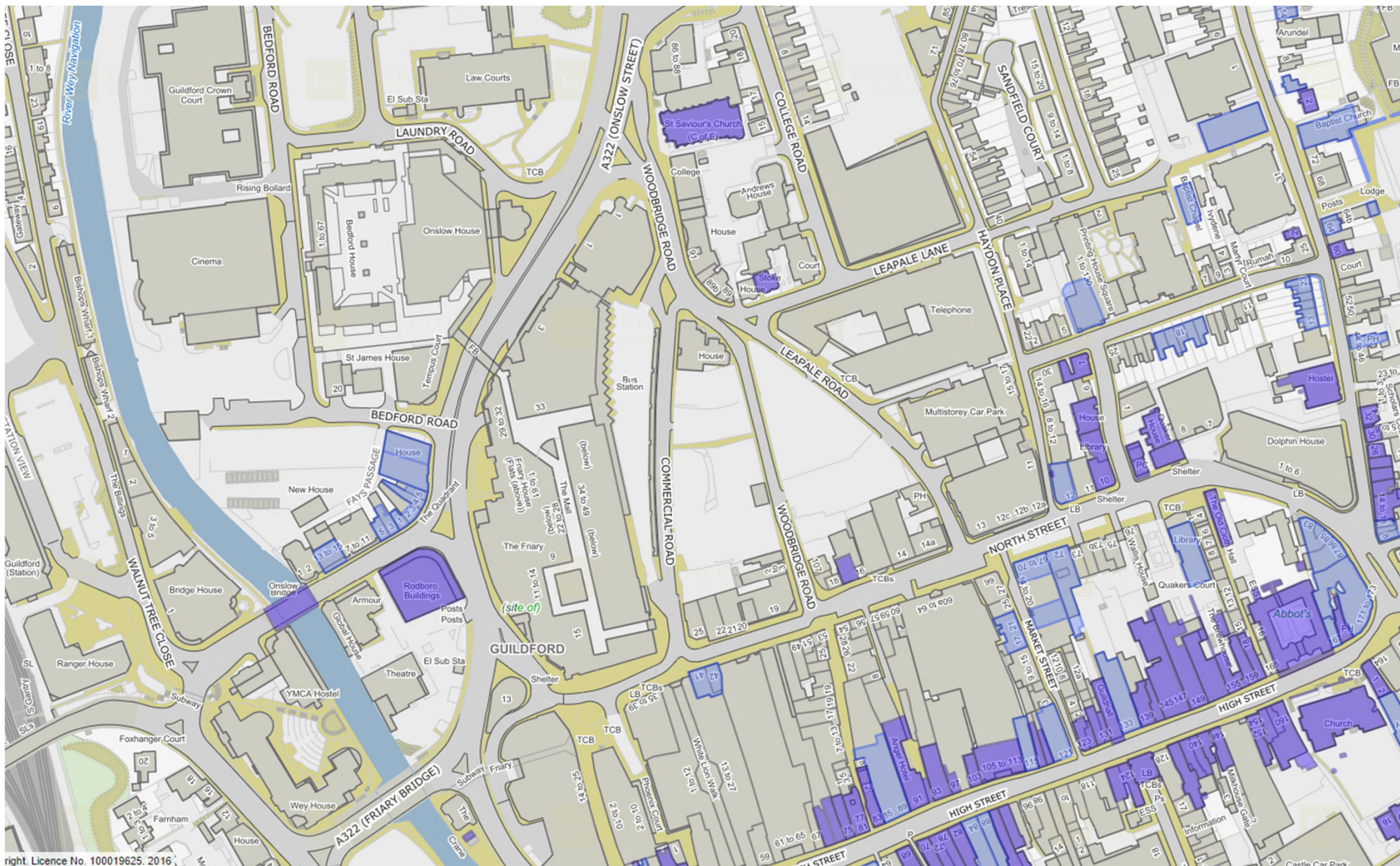
23/P/01212

17 North Street, Guildford

[Previous](#)

[Next](#)

[Home](#)



Site Location Plan

[Previous](#)

[Next](#)

[Home](#)

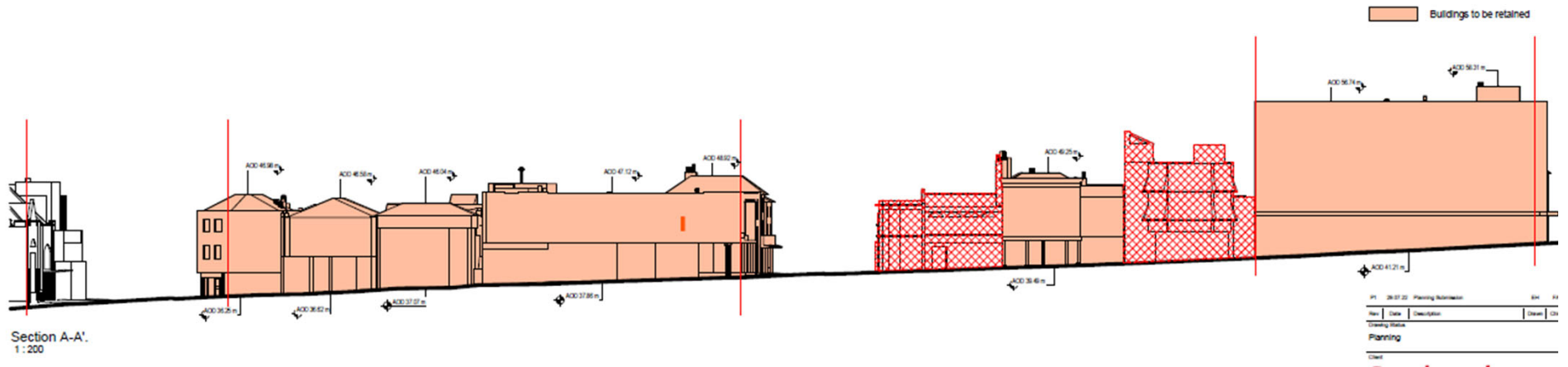


Block Plan

Previous

Next

Home



Section A-A'
1:200

Previous

Next

Home